



ORMAZABAL

Focus on Medium Voltage

Transformer Substations

CFI Photovoltaic Substation

Up to 24 kV



DESCRIPTION

Solution for transforming solar energy in photovoltaic facilities connected to the Medium Voltage network, made up of a prefabricated monoblock enclosure capable of housing the Transformer Substation and the specific components for this type of installation.





General characteristics

Transformer Substation made up of:

- Monoblock vibrated concrete enclosure.
- MV Cubicles.
- LV Board.
- LV/MV Transformer.

Independent **Inverter room**:

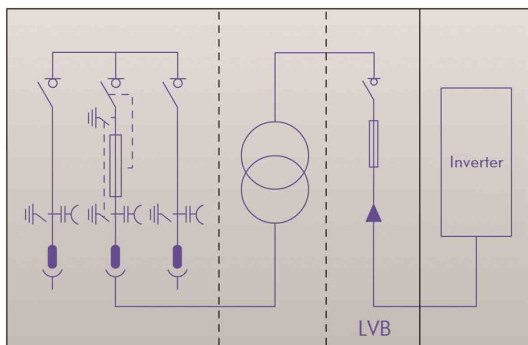
- Designed for location and operation in optimum inverter conditions.

ELECTRICAL EQUIPMENT

- Fully SF₆ insulated modular and/or compact MV cubicles up to 24 kV (configurations 2L1P, 1L1P, 0L1L1P, ...).
- LV/MV distribution transformer up to 24 kV / 100-160 kVA filled with oil (available in silicone and Midel).
- LV board with load break switch (160 A and 250 A) and fuse holder bases (possibility of integrating Auxiliary Services).
- Wall-mounted helical extraction unit for forced ventilation in the inverter room.
- Possibility of accommodating the most common inverters in the market.

Advantages

- Complete and integrated solution, with independent spaces and different access doors, depending on the operation and/or equipment maintenance requirements.
- Enclosure specifically designed for accommodating electrical switchgear, with the following features, among others: resistance to meteorological phenomena, integration in the surroundings and minimum visual impact.
- Optimum ventilation performance. Better environment control, with a lower consumption thanks to the independent Inverter enclosure.
- Reduction of civil work costs.
- Complete factory integration of elements (optional).



CGMCOSMOS-2LP configuration

PHYSICAL CHARACTERISTICS

Outer dimensions

Length	[mm]	4460
Width	[mm]	2380
Visible height	[mm]	2585
Enclosure weight (empty)	[kg]	12000

➔ For other configurations / values please contact our Technical-Commercial Department.